

- 1
- 2
- 3
- 4
- 5
- 6
- 7
- 8
- 9
- 10
- 11
- 12
- 13
- 14
- 15
- 16
- 17
- 18

**MATERIAL**

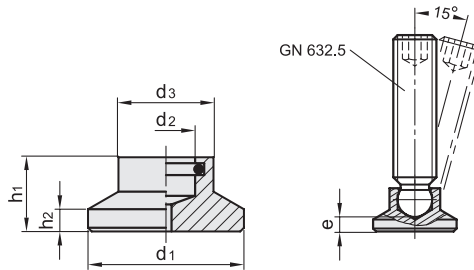
AISI 303 stainless steel.

**ELASTIC RING**

OR rubber FKM type VITON®.

**FEATURES AND APPLICATIONS**

GN 631.5 thrust pads are used to transmit clamping forces by means of grub screws GN 632.5 (see page 640). They can be adapted on irregular or non-parallel surfaces and allow the locking preventing the rotating movement of the screw from being exerted directly on the piece to be locked.



Conversion Table	
1 mm = 0.039 inch	
d1	
mm	inch
21	0.83
25	0.98
32	1.26
40	1.57
50	1.97

Code	Description	d1	d2	d3	h1	h2	e	Set screw GN 632.1/GN 632.5	⚖
GN.12170	GN 631.5-21-4.5	21	4.5	12.8	10	3	6	M6	16
GN.12171	GN 631.5-21-6.1	21	6.1	12.8	10	3	5	M8	16
GN.12172	GN 631.5-21-7.8	21	7.8	12.8	10	3	4.3	M10	14
GN.12173	GN 631.5-21-9.4	21	9.4	12.8	10	3	3.4	M12	13
GN.12175	GN 631.5-25-4.5	25	4.5	13	10.5	3	6.5	M6	22
GN.12176	GN 631.5-25-6.1	25	6.1	13	10.5	3	5.5	M8	20
GN.12177	GN 631.5-25-7.8	25	7.8	13	10.5	3	4.6	M10	20
GN.12178	GN 631.5-25-9.4	25	9.4	13	10.5	3	3.6	M12	39
GN.12180	GN 631.5-32-4.5	32	4.5	14	11	3	7	M6	34
GN.12181	GN 631.5-32-6.1	32	6.1	14	11	3	6	M8	35
GN.12182	GN 631.5-32-7.8	32	7.8	14	11	3	5	M10	33
GN.12183	GN 631.5-32-9.4	32	9.4	14	11	3	4.2	M12	50
GN.12186	GN 631.5-40-6.1	40	6.1	16	13	4	8	M8	67
GN.12187	GN 631.5-40-7.8	40	7.8	16	13	4	7	M10	60
GN.12188	GN 631.5-40-9.4	40	9.4	16	13	4	6.2	M12	65
GN.12191	GN 631.5-50-6.1	50	6.1	16	15.5	4	10.4	M8	116
GN.12192	GN 631.5-50-7.8	50	7.8	16	15.5	4	9.3	M10	115
GN.12193	GN 631.5-50-9.4	50	9.4	16	15.5	4	8.7	M12	114

Standard machine parts